

G Z V J #
R U J D Q I J D W I R Q X E X U H D X #
I X Q F W I R Q V
Linda Doughty
 Planning and Program Coordination Section, BSDW
 609-292-5550

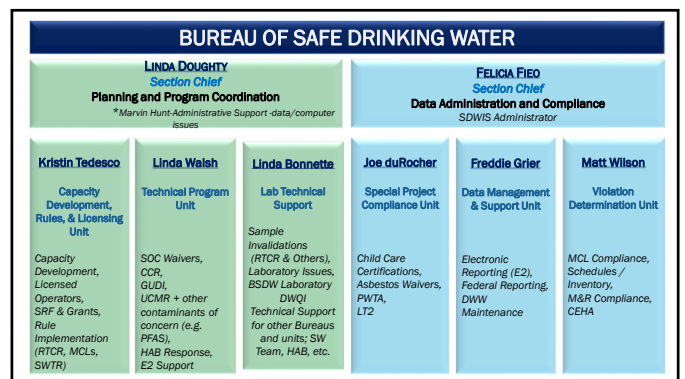
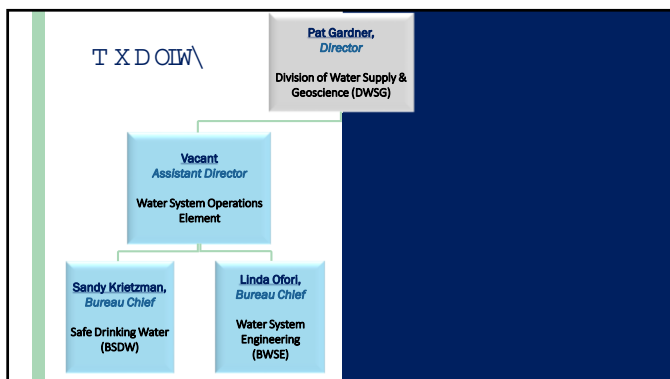
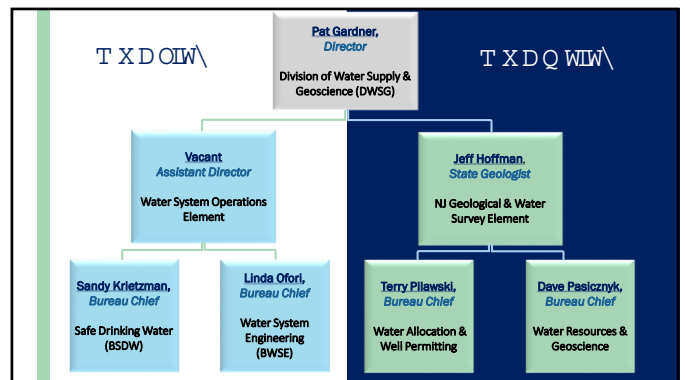
Laboratory Roundtable
November 1, 2018

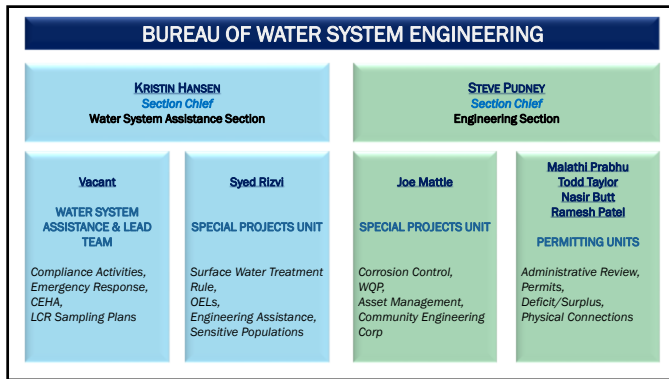
Highlights

- Division Self-Assessment
- Share our organizational chart- reorganized Sept 2017
- Provide an overview of current Bureau and unit functions

Division Self-Assessment –Goals

- Initiated Self-Assessment in 2016-- Why?
 - Tremendous focus nationwide on the water program
 - Improve program efficiencies and processes
 - Identify problem areas and make changes
 - Issues with staffing/succession planning





NOTABLE CHANGES

➤ **RETIREMENTS**

- Karen Fell*
- Gale Witkowski*
- Steve Doughty*
- Gene Callahan*
- Alan Dillon*
- John Burke*
- Pat Bono*
- Diane Zalaskus*
- Jan Gheen*

Other:

- Kati Angarone*

➤ **NEW STAFF**

- Filina Poonolly*
- Angela Cappetti*
- Kelly Hullen*
- Joe McNally*
- Darian Capellan*
- Brandon Carreno*
- Minnie Tangasi*
- Yoshi Nakajima*
- Matt Jones*
- Patti Stelmasczyk*
- The Lead Team*

<p>BSDW</p> <ul style="list-style-type: none"> Violation Reporting Inventory & Monitoring RTRC Sampling Plans Sample Invalidations CCRs Licensed Operators SOC/Asbestos Waivers E2 data processing DWW Questions Loan Program Capacity Development Child Cares UCMR <p style="color: red;">p (609) 292-5550</p>	<p>BWSE</p> <ul style="list-style-type: none"> Violation Follow-up Corrective Action Corrosion Control Treatment Water Main Breaks Water Quality Complaints PN Questions Pb Consumer Notices SDW Permits Physical Connections Lead Sampling Plans Permitting/CCT WQP <p style="color: red;">p (609) 292-2957</p>
---	---