

SAFE DRINKING WATER UPDATE

New Jersey Department of Environmental Protection
Division of Water Supply & Geoscience

November 2018

1

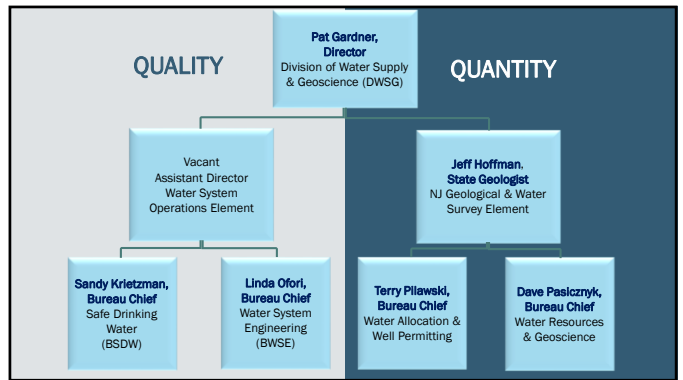
TOPICS:

- Division Organization
- New Regulations
 - *New Maximum Contaminant Levels*
 - *NTNC Rads*
- Updates to Existing Rules
 - *RTCR*
 - *LCR*
- Moving Forward
 - *Water Quality Accountability Act*
 - *Operator Certification*
 - *UCMR4*
 - *Misc.*
- General Reminders

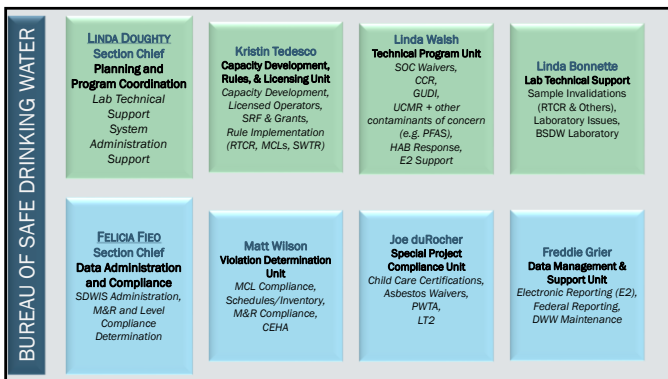
2

ORGANIZATION

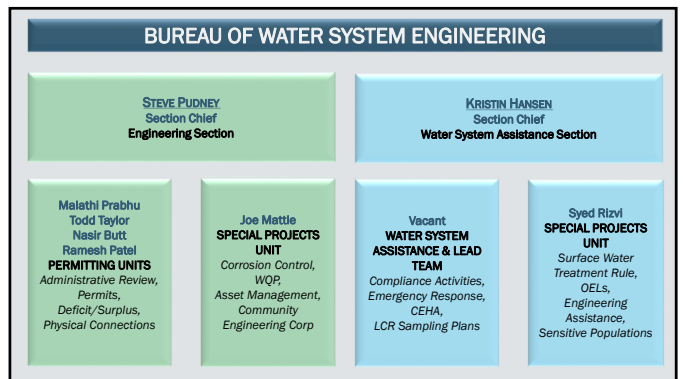
3




4



5




6



HOW TO GET CALLS DIRECTED TO THE CORRECT PERSON.....

- Always have your PWSID Number
- If calling in reference to a letter see if it lists a contact person at the bottom
- Be specific – a question regarding “lead and copper” could be several different people....
 - PBCU Sampling plans? (BWSE-WSA)
 - ALE? (BSDW-VDU)
 - Monitoring schedule? (PBCU: BSDW-VDU, WQP: BWSE-Engineering SPU)
 - CCTR? (BWSE-Engineering SPU)

7



How To Contact Us:

Bureau of Safe Drinking Water
p 609-292-5550
f 609-633-1495

Bureau of Water System Engineering
p 609-292-2957
f 609-292-1654

Division of Water Supply & Geoscience
Mail Code 401-04Q
401 E. State Street - P.O. Box 420
Trenton, New Jersey 08625-0420
<http://www.nj.gov/dep/watersupply/>
watersupply@dep.nj.gov

8